

PAROTA

Enterolobium cyclocarpum.



Geographic Distribution. Mexico, Central America, northern South America (Guyanas, Colombia, Venezuela, Brazil); cultivated in various parts of the world.



Characteristics. Sapwood of yellowish-white to grayish color, clearly differentiated from heartwood which ranges from brown to dark brown with subtle grain. Growth rings weakly marked. Coarse texture, somewhat lustrous surface; dry wood has no characteristic odor or taste.



Workability. Low to medium weight wood; moderately difficult to work with hand tools and machinery due to very irregular grain and frequent presence of tension wood. Offers excellent finishing and high polish but requires prior application of a sealer. Easy to lacquer and glue. Pre-drilling is not required for nailing and screwing.



Drying. The wood is moderately difficult to air-dry, showing deformations, especially in tangentially sawn boards. Technical drying takes medium time; moderate programs can be used such as G (UK) and T6-D4 (USA) for boards up to 2.5 cm thick, and T10-D3 for thicker material.



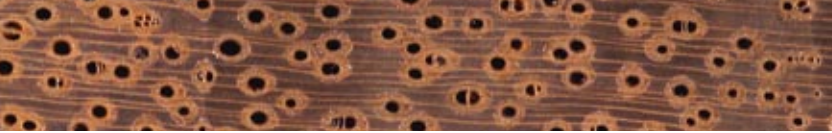
Natural Durability. Moderately resistant to fungi and resistant to termite attacks.



Current uses. General carpentry and cabinetry, interior and exterior paneling, molded products, doors and gates, casting molds, crafts, canoes and light boats.

Potential uses. Light interior construction, strip panels with and without coating for furniture and panels, decorative sliced veneers, packaging and frames.

Warning. Sawdust and sanding particles may cause skin and respiratory tract irritation.



Cross-section (approx. 12x magnification)



Surface: Tangential face (natural size)



Surface: Radial face (natural size)

Physical properties

Green weight [kg/m ³]	~ 750	
Air-dry density (12-15% MC) [g/cm ³]	0.38—0.45—0.52	
Shrinkage	Total*	Normal**
radial [%]	~ 2.2	~ 1.0
tangential [%]	~ 5.0	~ 2.6
Dimensional stability	fair	

Mechanical properties

Compressive strength (parallel, 12-15% MC) [N/mm ²]	24—35
Bending strength (12-15% MC) [N/mm ²]	43—60
Modulus of elasticity (bending, 12-15% MC) [N/mm ²]	4500—7400
Shear strength (12-15% MC) [N/mm ²]	6—7
JANKA hardness (side, 12-15% MC) [kN]	~2.4

*Green to dry (0% moisture); **Green to 12% moisture